

Y:\Planning\BKV-Hernando County Airport\Master Plan Update - 137218\Drawings\ALP Set (138379)\13_BKV_Terminal Area Drawing.dwg Modified: Jun 15, 2016 - 9:52am Plotted: Jun 15, 2016 - 9:53am AP:Nazarkevych

ID	DESCRIPTION	TOP EL.
1	HCUD WATER PLANT	85.6'
2	JOHN DEERE LANDSCAPES	93'
3	MR. G'S FOOD	90'
4	ANGELA LAND	88'
5	COMPOSITE MOTORS	85'
6	COMPOSITE MOTORS	85'
7	DYNAMIC PHARMACEUTICALS	88'
8	CMI COMPOSITE MOTORS INC	89'
9	CMI COMPOSITE MOTORS INC	87'
10	CMI COMPOSITE MOTORS INC	89'
11	HERNANDO COUNTY CHAMBER OF COMMERCE	87'
12	BAKER PARTS INC	95'
13	R&R GARAGE DOORS, INC	90'
14	PEARSON INDUSTRIES (LOT 12)	87'
15	SRS SERVICES	91'
16	AMSKILLS	92'
17	US POST OFFICE	96'
18	PREMIO FOOD	106'
19	T & T DEVELOPMENT	95'
20	MATTHEWS FAMILY LIMITED PARTNERSHIP	94'
21	JONI INDUSTRIES	91'
22	T.G. LEE	90'
23	AADD PROPERTIES (T.G. UNITED LABS)	89'
24	AADD PROPERTIES (T.G. UNITED LABS)	89'
25	SCP	90'
26	BRIGHT HOUSE NETWORKS	98'
27	PEARSON INDUSTRIES	99'
28	PARKS & RECREATION HERNANDO COUNTY	88'
29	FLORIDA WATER PRODUCTS	96'
30	INDUCTION SOLUTIONS	101'
31	B & D NYLON CREATIONS	88'
32	PREMIO FOOD	93'
33	ICTC	90'
34	ICTC	90'
35	SHO ME NUTRACEUTICALS	86'
36	IMEX MODEL CO. INC	94'
37	DISCOUNT GARAGE DOORS	88'
38	BREINER MACHINE INC	88'
39	LED INTERNATIONAL LIGHTING	87'
40	MANZI METALS	84'
41	KABLELINK COMMUNICATIONS	91'
42	ANGELA LAND	97'
43	S & W HEALTHCARE	107'

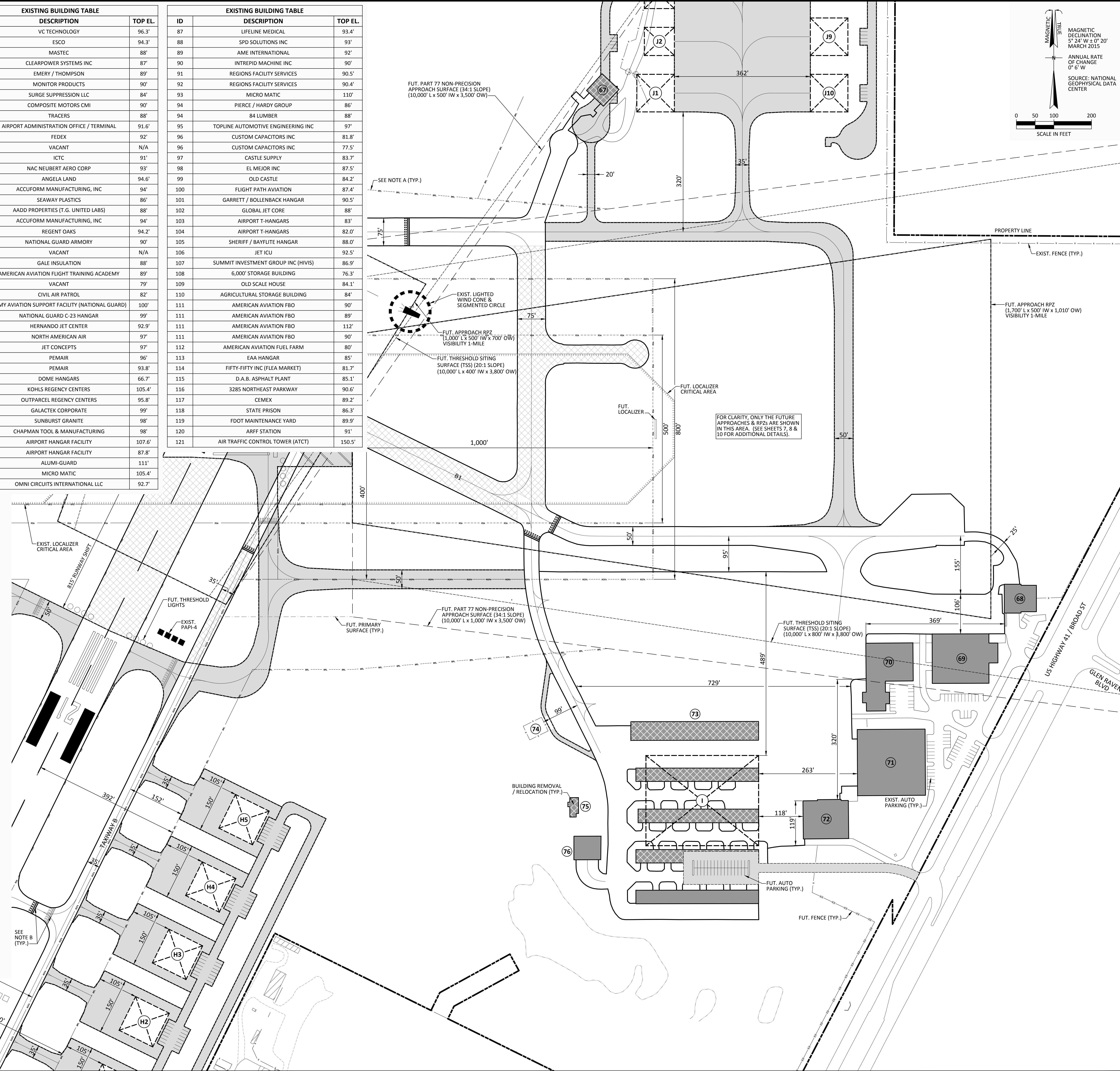
ID	DESCRIPTION	TOP EL.
44	VC TECHNOLOGY	96.3'
45	ESCO	94.3'
46	MASTEC	88'
47	CLEARPOWER SYSTEMS INC	87'
48	EMERY / THOMPSON	89'
49	MONITOR PRODUCTS	90'
50	SURGE SUPPRESSION LLC	84'
51	COMPOSITE MOTORS CMI	90'
52	TRACERS	88'
53	AIRPORT ADMINISTRATION OFFICE / TERMINAL	91.6'
54	FEDEX	92'
55	VACANT	N/A
56	ICTC	91'
57	NAC NEUBERT AERO CORP	93'
58	ANGELA LAND	94.6'
59	ACCUFORM MANUFACTURING, INC	94'
60	SEAWAY PLASTICS	86'
61	AADD PROPERTIES (T.G. UNITED LABS)	88'
62	ACCUFORM MANUFACTURING, INC	94'
63	REGENT OAKS	94.2'
64	NATIONAL GUARD ARMORY	90'
65	VACANT	N/A
66	GALE INSULATION	88'
67	AMERICAN AVIATION FLIGHT TRAINING ACADEMY	89'
68	VACANT	79'
69	CIVIL AIR PATROL	82'
70	ARMY AVIATION SUPPORT FACILITY (NATIONAL GUARD)	100'
71	NATIONAL GUARD C-23 HANGAR	99'
72	HERNANDO JET CENTER	92.9'
73	NORTH AMERICAN AIR	97'
74	JET CONCEPTS	97'
75	PEMAIR	96'
76	PEMAIR	93.8'
77	DOVE HANGARS	66.7'
78	KOHL'S REGENCY CENTERS	105.4'
79	OUTPARCEL REGENCY CENTERS	95.8'
80	GALACTEK CORPORATE	99'
81	SUNBURST GRANITE	98'
82	CHAPMAN TOOL & MANUFACTURING	98'
83	AIRPORT HANGAR FACILITY	107.6'
84	AIRPORT HANGAR FACILITY	87.8'
83	ALUMI-GUARD	111'
85	MICRO MATIC	105.4'
86	OMNI CIRCUITS INTERNATIONAL LLC	92.7'

ID	DESCRIPTION	TOP EL.
87	LIFELINE MEDICAL	93.4'
88	SPD SOLUTIONS INC	93'
89	AME INTERNATIONAL	92'
90	INTREPID MACHINE INC	90'
91	REGIONS FACILITY SERVICES	90.5'
92	REGIONS FACILITY SERVICES	90.4'
93	MICRO MATIC	110'
94	PIERCE / HARDY GROUP	86'
94	84 LUMBER	88'
95	TOPLINE AUTOMOTIVE ENGINEERING INC	97'
96	CUSTOM CAPACITORS INC	81.8'
96	CUSTOM CAPACITORS INC	77.5'
97	CASTLE SUPPLY	83.7'
98	EL MEJOR INC	87.5'
99	OLD CASTLE	84.2'
100	FLIGHT PATH AVIATION	87.4'
101	GARRETT / BOLLENBACK HANGAR	90.5'
102	GLOBAL JET CORE	88'
103	AIRPORT T-HANGARS	83'
104	AIRPORT T-HANGARS	82.0'
105	SHERIFF / BAYFLITE HANGAR	88.0'
106	JET ICU	92.5'
107	SUMMIT INVESTMENT GROUP INC (HIVIS)	86.9'
108	6,000' STORAGE BUILDING	76.3'
109	OLD SCALE HOUSE	84.1'
110	AGRICULTURAL STORAGE BUILDING	84'
111	AMERICAN AVIATION FBO	90'
111	AMERICAN AVIATION FBO	89'
111	AMERICAN AVIATION FBO	112'
111	AMERICAN AVIATION FBO	90'
112	AMERICAN AVIATION FUEL FARM	80'
113	EAA HANGAR	85'
114	FIFTY-FIFTY INC (FLEA MARKET)	81.7'
115	D.A.B. ASPHALT PLANT	85.1'
116	3285 NORTHEAST PARKWAY	90.6'
117	CEMEX	89.2'
118	STATE PRISON	86.3'
119	FDOT MAINTENANCE YARD	89.9'
120	ARFF STATION	91'
121	AIR TRAFFIC CONTROL TOWER (ATCT)	150.5'

NOTE:
1. EXISTING BUILDING ELEVATIONS WERE OBTAINED FROM A COMBINATION OF THE PREVIOUS 2008 AIRPORT LAYOUT PLAN DRAWING AND QUANTUM SPATIAL SURVEY, FLOWN OCTOBER 2013.

ID	DESCRIPTION	TOP EL.
A	POTENTIAL MAINTENANCE FACILITY HANGAR (150' x 150')	112.0'
B1	HANGAR (150' x 150')	110.0'
B2	HANGAR (150' x 150')	110.0'
B3	HANGAR (150' x 150')	110.0'
B4	HANGAR (150' x 150')	110.0'
B5	HANGAR (150' x 150')	110.0'
B6	HANGAR (150' x 150')	110.0'
B7	HANGAR (150' x 150')	110.0'
B8	HANGAR (150' x 150')	110.0'
B9	HANGAR (150' x 150')	110.0'
B10	HANGAR (150' x 150')	110.0'
C1	POTENTIAL MAINTENANCE FACILITY HANGAR	105.0'
C2	POTENTIAL MAINTENANCE FACILITY HANGAR (180' x 190')	110.0'
D	POTENTIAL AIR CARGO FACILITY (200' x 400')	120.0'
E1	POTENTIAL COMMERCIAL AVIATION DEVELOPMENT HANGAR (400' x 250')	101.0'
E2	POTENTIAL COMMERCIAL AVIATION DEVELOPMENT HANGAR (400' x 250')	101.0'
F	POTENTIAL AIRPORT MAINTENANCE & FUELING AREA	TBD
G1	T-HANGAR	89.3'
G2	T-HANGAR	90.1'
G3	T-HANGAR	89.3'
G4	T-HANGAR	90.1'
G5	T-HANGAR	89.3'
G6	T-HANGAR	89.3'
G7	T-HANGAR	89.3'
G8	T-HANGAR	89.3'
G9	T-HANGAR	89.3'
G10	T-HANGAR	89.3'
H1	HANGAR (100' x 100')	102.0'
H2	HANGAR (100' x 100')	102.0'
H3	HANGAR (100' x 100')	102.0'
H4	HANGAR (100' x 100')	102.0'
H5	HANGAR (100' x 100')	102.0'
I	HANGAR (240' x 300')	102.0'
J1	HANGAR (100' x 100')	105.0'
J2	HANGAR (75' x 80')	100.0'
J3	HANGAR (75' x 80')	100.0'
J4	HANGAR (75' x 80')	100.0'
J5	HANGAR (75' x 80')	100.0'
J6	HANGAR (100' x 150')	110.0'
J7	HANGAR (100' x 100')	105.0'
J8	HANGAR (100' x 100')	105.0'
J9	HANGAR (100' x 100')	105.0'
J10	HANGAR (100' x 100')	105.0'
K	FUTURE MRO FACILITY	115.0'
L	CUSTOMS FACILITY	91.0'

NOTE:
1. FUTURE BUILDING ELEVATIONS WERE CALCULATED BASED UPON THEIR ESTIMATED HEIGHT ABOVE GROUND LEVEL.



BKV
BROOKVILLE-TAMPA BAY REGIONAL AIRPORT
Brooksville, Florida

Michael Baker INTERNATIONAL

Designer: **APN** Checked by: **MJK**
 Technician: **APN** Project Number: **137218**

- NOTES:**
- GENERAL NOTES:**
- BASE MAPPING SOURCE: QUANTUM SPATIAL SURVEY, FLOWN OCTOBER 2013.
 - THE (NAVD83) VERTICAL CONTROL DATUM WAS USED FOR ALL ELEVATIONS. ALL ELEVATIONS SHOWN ARE ABOVE MEAN SEA LEVEL (AMSL).
 - THE NAD83 COORDINATE SYSTEM WAS USED FOR ALL LATITUDE AND LONGITUDE COORDINATES.

- PLAN REFERENCED NOTES:**
- A. BUILDING RESTRICTION LINE (BRL) ASSUMES A HEIGHT OF 20' ABOVE THE NEAREST RUNWAY ELEVATION.
- B. EXISTING / FUTURE HOLDING POSITION MARKINGS FOR RUNWAY 9-27 ARE LOCATED 250' FROM RUNWAY CENTERLINE. EXISTING HOLDING POSITION MARKINGS FOR RUNWAY 9-21 ARE LOCATED =155' FROM RUNWAY CENTERLINE. FUTURE HOLDING POSITION MARKINGS FOR RUNWAY 9-21 ARE LOCATED 200' FROM RUNWAY CENTERLINE.

REVISIONS			
NO.	DESCRIPTION	DATE	BY

DRAFT

Project Name:
AIRPORT MASTER PLAN UPDATE

Drawing Name:
TERMINAL AREA DRAWING

FAA AIP # / STATE GRANT #
3-12-008-016-2013 / 4241042

Division:
PLANNING

Date:
JUNE 2015

Drawing Number:
13