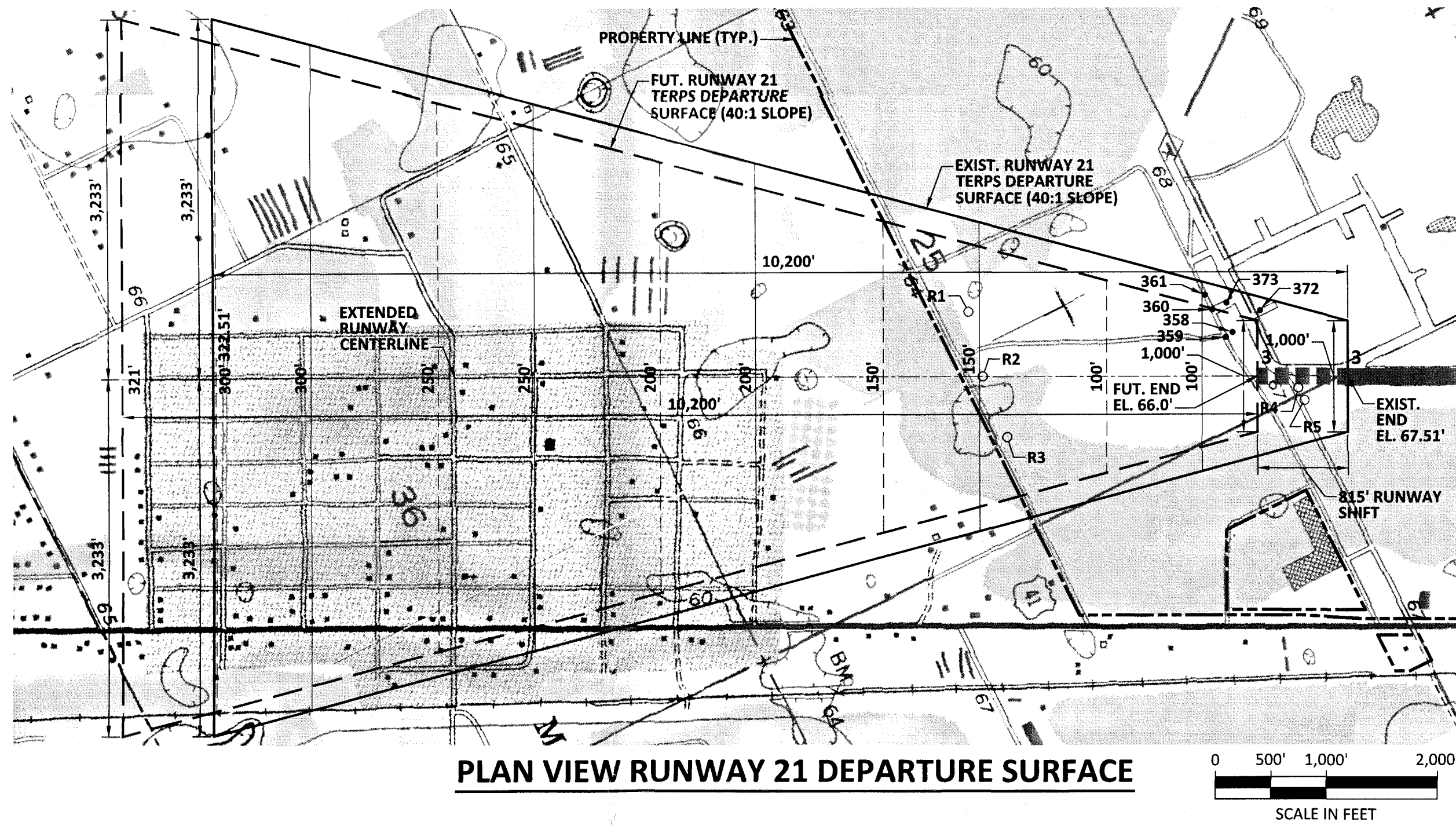
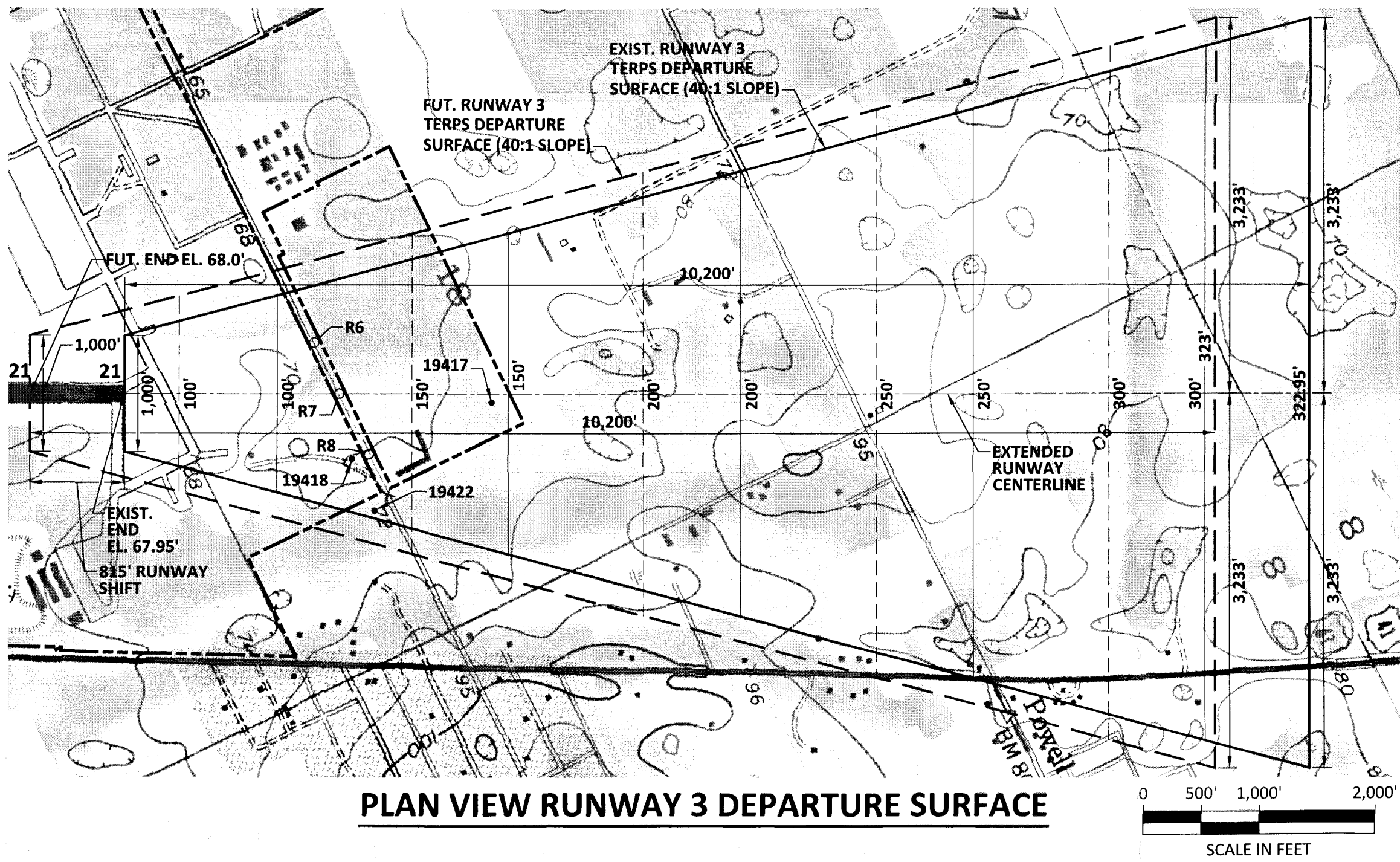


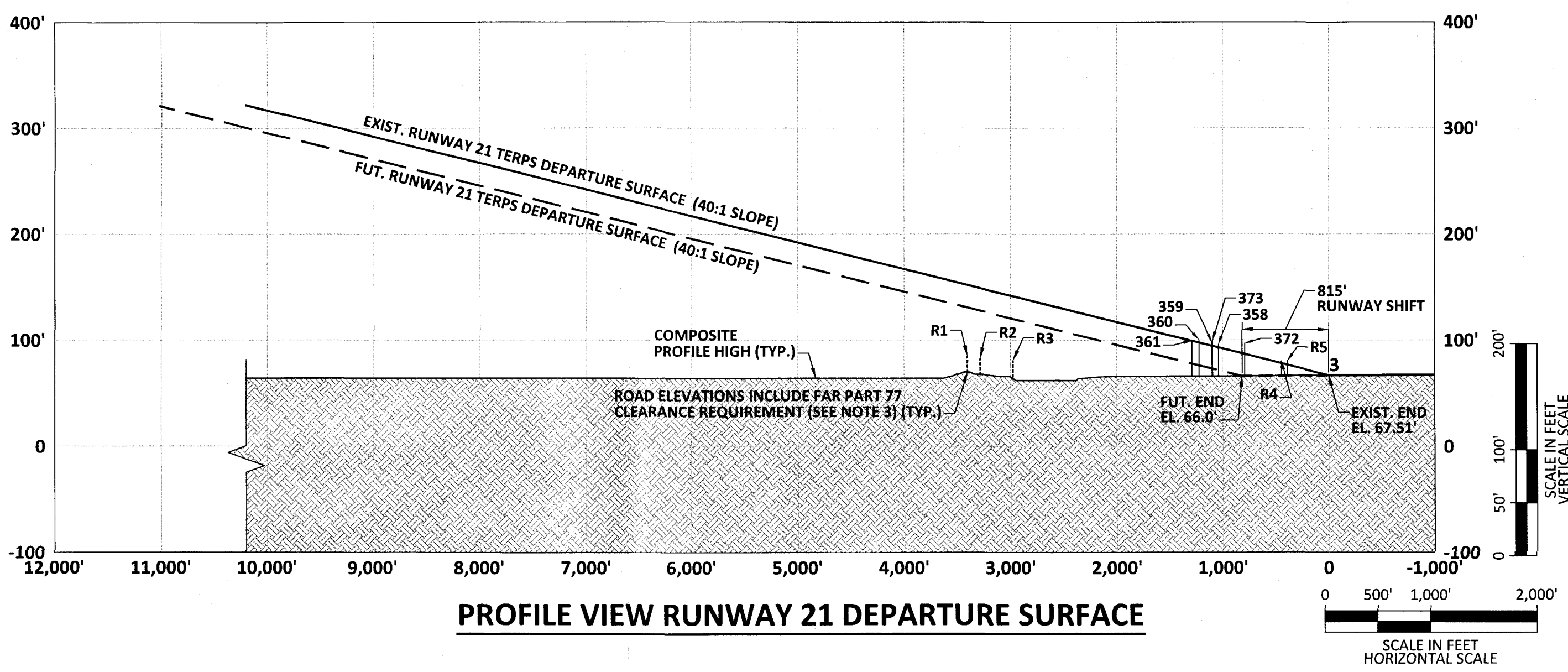
V:\Planning\BKV-Hernando County Airport\Master Plan Update - 137216 Drawings\A-P Set (1383.rvt)\11-12-(BKV)_Runway Departure Surface Drawing.dwg Modified: Jun 14, 2016 - 8:17am Plotted: Aug 02, 2016 - 2:45pm cpozarowaych



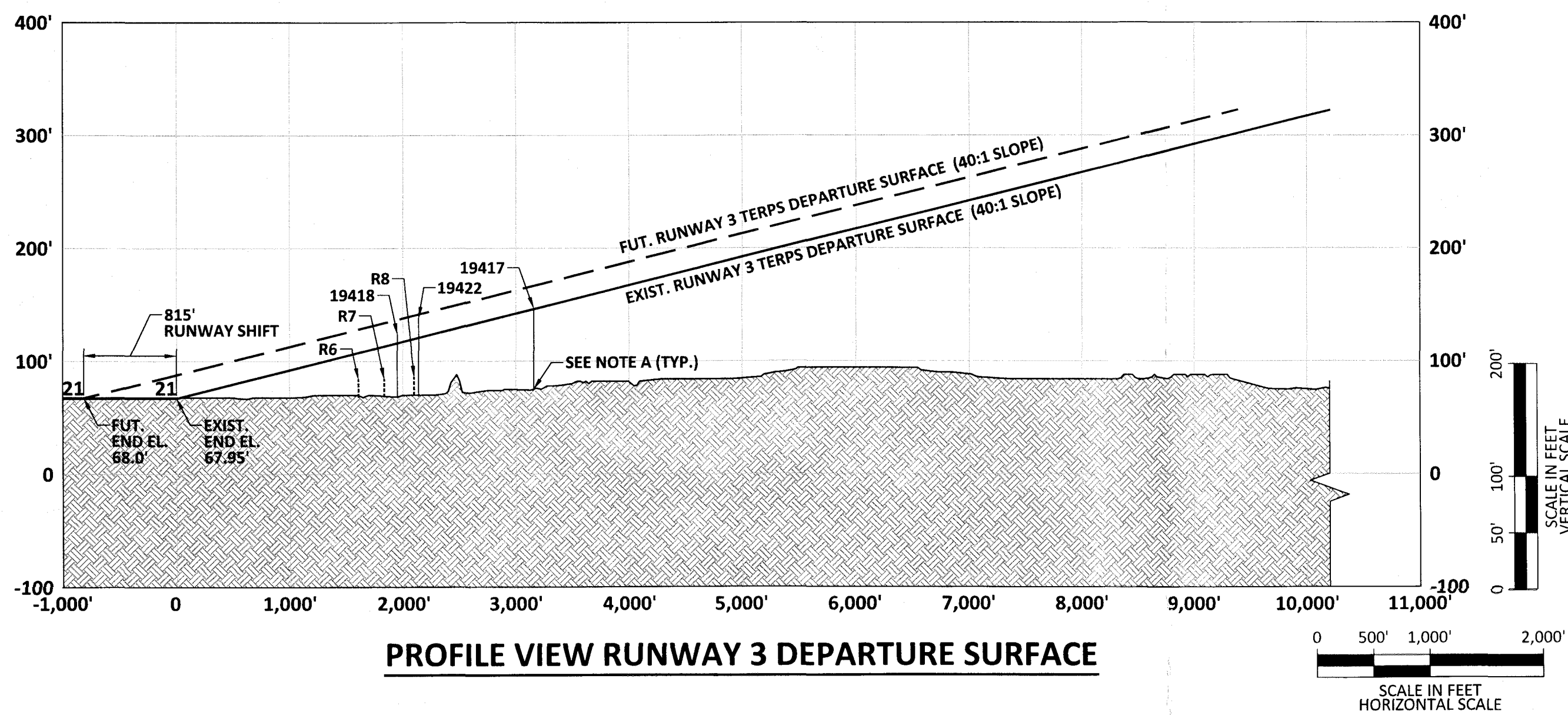
PLAN VIEW RUNWAY 21 DEPARTURE SURFACE



PLAN VIEW RUNWAY 3 DEPARTURE SURFACE



PROFILE VIEW RUNWAY 21 DEPARTURE SURFACE



PROFILE VIEW RUNWAY 3 DEPARTURE SURFACE

RUNWAY 21 TERPS (40:1 SLOPE) DEPARTURE SURFACE OBSTRUCTION DATA TABLE						
ID	DESCRIPTION	OBJECT TOP ELEVATION	EXISTING SURFACE ELEVATION	EXISTING PENETRATION	FUTURE SURFACE ELEVATION	FUTURE PENETRATION
358	POWER POLE	95.8'	93.1'	2.7'	71.5'	24.2'
359	POWER POLE	97.8'	94.6'	3.2'	73.1'	24.7'
360	POWER POLE	100.3'	97.7'	2.6'	76.2'	24.1'
361	POWER POLE	99.6'	99.3'	0.3'	N/A	N/A
372	POWER POLE	96.7'	86.9'	9.8'	N/A	N/A
373	POWER POLE	99.6'	94.4'	5.2'	N/A	N/A

NOTE:
1. OBSTRUCTION DATA SOURCE: QUANTUM SPATIAL SURVEY, FLOWN 10/17/2013.

TRAVERSE WAY TABLE					
ID	ROADWAY ELEVATION	ROADWAY ELEVATION + PART 77 CLEARANCE REQUIREMENTS	EXISTING PENETRATION	FUTURE PENETRATION	DISPOSITION
R1	70.4'	85.4'	-67.0'	-45.5'	NONE
R2	68.0'	83.0'	-66.2'	-44.7'	NONE
R3	66.6'	81.6'	-62.1'	-40.6'	NONE
R4	65.1'	80.1'	1.8'	N/A	ROAD CLOSURE
R5	65.2'	80.2'	3.3'	N/A	ROAD CLOSURE

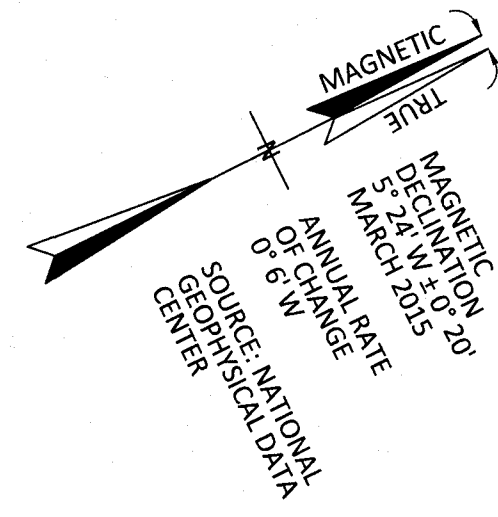
NOTE:
1. ROAD ELEVATIONS ARE ESTIMATED AND INCLUDE PART 77 CLEARANCE REQUIREMENTS. (TYP.)
2. NEGATIVE PENETRATIONS INDICATE DISTANCE BELOW SURFACE. (TYP.)

RUNWAY 3 TERPS (40:1 SLOPE) DEPARTURE SURFACE OBSTRUCTION DATA TABLE						
ID	DESCRIPTION	OBJECT TOP ELEVATION	EXISTING SURFACE ELEVATION	EXISTING PENETRATION	FUTURE SURFACE ELEVATION	FUTURE PENETRATION
19417	TREE	146.9'	146.5'	0.4'	167.3'	-20.4'
19418	TREE	125.6'	116.3'	7.3'	137.2'	-13.6'
19422	TREE	138.0'	121.0'	17.0'	141.9'	-3.9'

NOTE:
1. OBSTRUCTION DATA SOURCE: QUANTUM SPATIAL SURVEY, FLOWN 10/17/2013.

TRAVERSE WAY TABLE					
ID	ROADWAY ELEVATION	ROADWAY ELEVATION + PART 77 CLEARANCE REQUIREMENTS	EXISTING PENETRATION	FUTURE PENETRATION	DISPOSITION
R6	69.1'	84.1'	-23.9'	-44.8'	NONE
R7	69.4'	84.4'	-29.0'	-50.0'	NONE
R8	71.0'	86.0'	-33.8'	-54.7'	NONE

NOTE:
1. ROAD ELEVATIONS ARE ESTIMATED AND INCLUDE PART 77 CLEARANCE REQUIREMENTS. (TYP.)
2. NEGATIVE PENETRATIONS INDICATE DISTANCE BELOW SURFACE. (TYP.)



BROOKVILLE-TAMPA BAY REGIONAL AIRPORT
Brookville, Florida

Michael Baker
INTERNATIONAL

Designer: APN
Checked by: MJK
Technician: APN
Project Number: 137218

NOTES:

- THE NAVD88 VERTICAL CONTROL DATUM WAS USED FOR ALL ELEVATIONS. ALL ELEVATIONS SHOWN ARE ABOVE MEAN SEA LEVEL (AMSL).
- NO INSTRUMENT DEPARTURE PROCEDURES ARE CURRENTLY PUBLISHED FOR THE RUNWAYS AT BKV, NOR ARE ANY PLANNED AT THIS TIME. AS SUCH, THIS DEPARTURE SURFACES DRAWING IS PROVIDED FOR INFORMATIONAL PURPOSES ONLY. THE ILLUSTRATED DEPARTURE SURFACES EXTEND OUT AT A SLOPE OF 40:1 FROM THE RUNWAY END ELEVATIONS AND THEREFORE REPRESENT THE STRICTEST FAA EVALUATION CRITERIA FOR DEPARTURE FROM NON-COMMERCIAL RUNWAYS. OVERALL, THE INFORMATION PRESENTED IN THIS DEPARTURE SURFACES DRAWING SHOULD BE CONSIDERED FOR LAND USE PLANNING PURPOSES.
- FEDERAL AVIATION REGULATIONS (FAR) PART 77 SPECIFIES CLEARANCE REQUIREMENTS FOR ROADS, RAILROADS, AND WATERWAYS AS FOLLOWS: A) 17 FEET FOR AN INTERSTATE HIGHWAY, B) 15 FEET FOR ANY OTHER PUBLIC ROADWAY, C) 10 FEET OR THE HEIGHT OF THE HIGHEST MOBILE OBJECT THAT WOULD NORMALLY TRAVERSE THE ROAD, WHICHEVER IS GREATER, FOR A PRIVATE ROAD, D) 23 FEET FOR A RAILROAD, AND E) FOR A WATERWAY OR ANY OTHER TRAVERSE WAY NOT PREVIOUSLY MENTIONED, AN AMOUNT EQUAL TO THE HEIGHT OF THE HIGHEST MOBILE OBJECT THAT WOULD NORMALLY TRAVERSE IT.

PLAN REFERENCED NOTES:

- A. THE BASE ELEVATIONS OF ALL OBJECTS ARE UNKNOWN. THEREFORE, OBJECTS WERE TRIMMED AT THE COMPOSITE PROFILE HIGH.

REVISIONS

NO.	DESCRIPTION	DATE	BY

Project Name:

AIRPORT MASTER
PLAN UPDATE

Drawing Name:

RUNWAY DEPARTURE
SURFACE DRAWING -
RUNWAY 3-21

FAA AIP # / STATE GRANT #

3-12-0008-016-2013 / 4241042

Division:

PLANNING

Date:

JUNE 2015

Drawing Number:

11